

Block Shapes

An overview of the AB Courtyard Collection Blocks

The AB Courtyard Collection allows you to build an unlimited variety of projects using five block shapes: the full-sized AB Dublin, the half-sized AB York, Corner Blocks, Wall Caps and Post Caps.



AB Dublin

AB Dublin blocks are the best choice for building straight walls and can be combined with the AB York blocks to build a variety of patterns. AB Dublins come in three slightly different styles, one is angled to the right and the other two are angled to the left (shown below). All AB Dublin blocks have built-in splitting notches to make splitting blocks easy. When building panels with posts/pillars or corners, or when transitioning into curved walls, you will need to split blocks to create a straight edge that eliminates gaps.

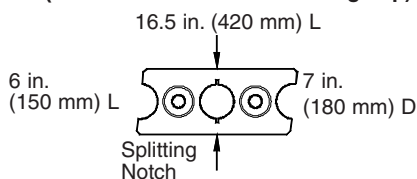
Each pallet includes one AB Dublin end-split block for every two AB Dublin center-split blocks.

AB Dublin



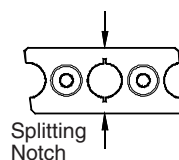
39 lbs.
(18 kg)

Angle right with a center split (As shown with the raised rings up)



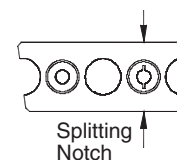
Use as a full size block or split it in 1/2 for transitions.

Angle left with a center split (As shown with the raised rings up)



Use as a full size block or split it in 1/2 for transitions.

Angle left with an end split (As shown with the raised rings up)



Use as a full size block or as a 3/4 and 1/4 block for transitions.

AB York

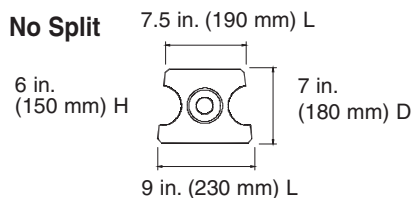
AB York blocks are needed for building curved walls. They can also be combined with AB Dublin blocks to add variety and random patterns to straight walls. AB York blocks come in two slightly different styles; one has a splitting notch in the center and the other does not.

Each pallet includes one AB York center-split block for every five York blocks without a split.

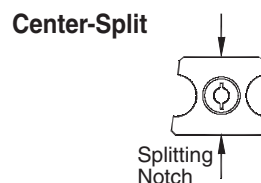
AB York



20 lbs.
(9 kg)



Use as a full size block



Use as a full size block or split in 1/2 for transitions

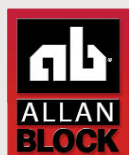
Cutting and Splitting Blocks

Splitting and cutting blocks requires a hammer and chisel or a masonry saw. See How-to sheet #210 for more information.

All information shown is for use with Allan Block Courtyard only.

All specifications are approximate, contact your local distributor for exact dimensions.

For a complete library of AB Courtyard Collection How-to sheets visit allanblock.com



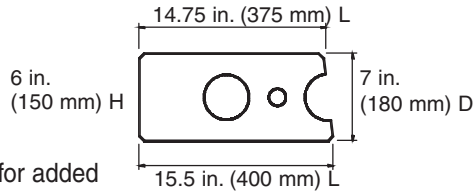
Block Shapes

An Overview of the AB Courtyard Collection Blocks

Corner Blocks

Use Corner Blocks to:

- Create corners.
See How-to sheet #180.
- Create posts/pillars.
See How-to sheet #220.
- Interlock wall panels and posts/pillars for added stability. *See How-to sheet #230.*
- Step down or end walls.
See How-to sheet #160.



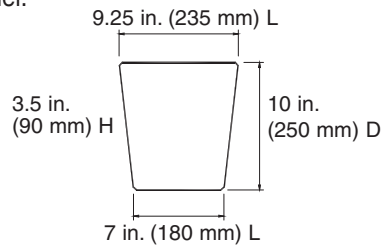
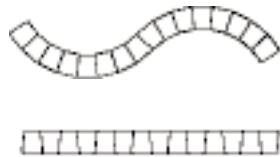
Corner Block



Wall Cap Blocks

Wall Caps are used to finish the top of a wall panel. Secure them in place with masonry adhesive (adhesive optional).

Top view of Wall Caps



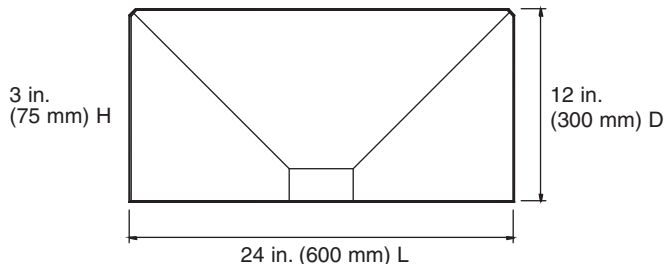
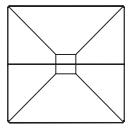
Wall Cap



Post Cap Blocks

Post Caps are used to finish the top of a post/pillar. Two Post Caps are used to finish each post/pillar. Secure them in place with masonry adhesive (adhesive optional).

Top view of Post Caps

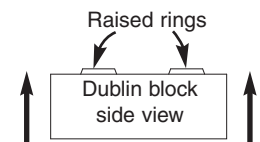


Post Cap



Block Use Tips:

- In most cases, AB Dublin and AB York blocks should be laid with the raised rings facing up. This creates an interlock between the courses that adds stability to the wall panel.
- Blocks can also be used with the raised rings facing down (no more than 20% of the time). This may be necessary in order to use a block in a space that requires a specific right or left angle.
- Use a York block to switch the angle orientation of the wall.



All specifications are approximate, contact your local distributor for exact dimensions.

For a complete library of AB Courtyard Collection How-to sheets visit allanblock.com

The information shown here is for use with the Allan Block Courtyard products only.



allanblock.com